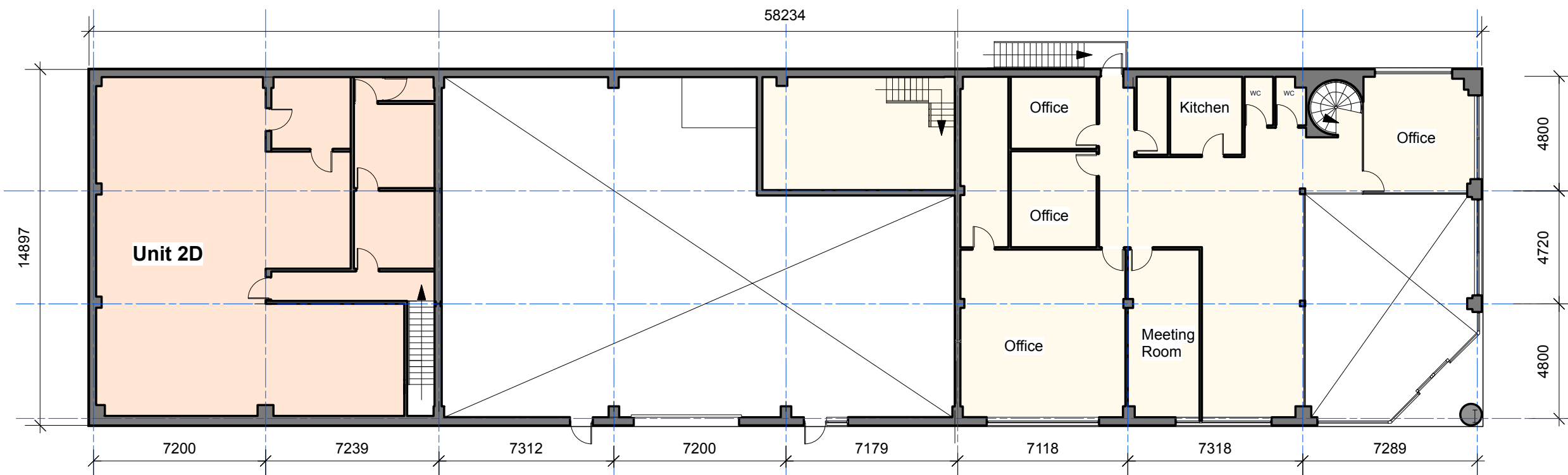


Ground Floor Plan



First Floor Plan (G.I.F.A. 478sq.m/ 5,145 sq.ft)

	Unit 2A (Ground & First) G.I.F.A. 602 sq.m/ 6,481 sq.ft		Unit 2B (Ground) G.I.F.A. 331.7q.m/ 3,570 sq.ft		Unit 2C (Ground) G.I.F.A. 124sq.m/ 1,335 sq.ft		Unit 2D (Ground) G.I.F.A. 200sq.m/ 2,153 sq.ft
--	--	--	--	--	--	--	--

Building 2 (sub division options)
 14 Courtauld Way, Campsie Industrial Estate, Eglinton